

HOOD INFORMATION

HOOD NO.	TAG	MODEL	LENGTH	MAX. COOKING TEMP.	EXHAUST PLENUM RISER(S)							TOTAL SUPPLY CFM	HOOD CONSTRUCTION	HOOD CONFIG.	
					TOTAL EXH. CFM	WIDTH	LENG.	HEIGHT	DIA.	CFM	S.P.			END TO END	ROW
1		4824 EX-2-PSP-F	4' 0.00'	600 Deg.	900			4'	10'	900	-0.367'	720	430 SS Where Exposed	ALONE	ALONE

PATENT NUMBERS

AC-PSP (United States) - US Patent 7963830 B2
 AC-PSP Wall (Canada) - CA Patent 2820509
 AC-PSP Island (Canada) - CA Patent 2520330

HOOD INFORMATION

HOOD NO.	TAG	FILTER(S)					LIGHT(S)			UTILITY CABINET(S)				FIRE SYSTEM PIPING	HOOD HANGING WGHT
		TYPE	QTY.	HEIGHT	LENGTH	EFFICIENCY @ 9 MICRONS	QTY.	TYPE	WIRE GUARD	LOCATION	SIZE	FIRE SYSTEM TYPE	ELECTRICAL MODEL #	SWITCHES QUANTITY	
1		SS Baffle with Handles	2	16"	16"	30%	2	L55 Series E26	NO					NO	255 LBS

PERFORATED SUPPLY PLENUM(S)

HOOD NO.	TAG	POS.	LENGTH	WIDTH	HEIGHT	TYPE	RISER(S)				
							WIDTH	LENG.	DIA.	CFM	S.P.
1		Front	48"	18"	6"	MUA	12"	28"		720	0.195"



GREASE DUCT SPECIFICATIONS:

PROVIDE GREASE DUCT EQUAL TO ECON-AIR MODEL "EDW"
 ROUND 20 GAUGE 430 STAINLESS STEEL DUCTWORK. MODEL "EDW"
 IS LISTED TO UL-1978 AND IS INSTALLED USING "V" CLAMP LOCKING
 CONNECTIONS SEALED WITH 3M FIRE BARRIER 2000 PLUS. MODEL "EDW"
 DOES NOT REQUIRE WELDING PROVIDING IT HAS BEEN INSTALLED PER
 THE MANUFACTURES INSTALLATION GUIDE.

PROVIDE RATED ACCESS DOORS AT EVERY CHANGE IN DIRECTION AND EVERY 12' ON CENTER.
 PER MANUFACTURES LISTING MODEL "EDW" HORIZONTAL RUNS LESS THAN 75 FT. CAN BE
 SLOPED 1/16" PER 12", HORIZONTAL RUNS MORE THAN 75 FT. CAN BE SLOPED 3/16" PER 12".
 DUCT SHOULD BE SLOPED AS MUCH AS POSSIBLE TO REDUCE THE CHANCE OF GREASE
 ACCUMULATION IN HORIZONTAL RUNS.

IF THE DUCT IS WITHIN 18 INCHES OF COMBUSTIBLE MATERIAL, PROVIDE UL-2221 LISTED
 DOUBLE WALL GREASE DUCT EQUAL TO ECON-AIR MODEL "EDW- 2R, 3R, OR 3Z" ROUND 20
 GAUGE 430 STAINLESS INNER DUCT INSULATED WITH A 24 GAUGE 430 STAINLESS OUTER
 SHELL.

ECON-AIR RECOMMENDS THE USE OF LISTED,
 PRE-FABRICATED ROUND GREASE EXHAUST DUCT
 TO REDUCE STATIC PRESSURE IN THE SYSTEM,
 MINIMIZE INSTALLATION AND INSPECTION TIMES,
 AND ENSURE DUCT IS LIQUID TIGHT

HVAC DISTRIBUTION NOTE

IT IS RECOMMENDED NOT TO INSTALL HIGH
 VELOCITY DIFFUSERS OR HVAC RETURNS
 WITHIN TEN (10) FEET OF THE EXHAUST HOOD.
 PERFORATED DIFFUSERS ARE RECOMMENDED.

VERIFY CEILING HEIGHT

___' - ___"

HEIGHT REQUIRED TO VERIFY THAT HOOD FITS SPACE AND TO SIZE THE ENCLOSURE PANELS

CUSTOMER APPROVAL TO MANUFACTURE:

Approved as Noted ☐

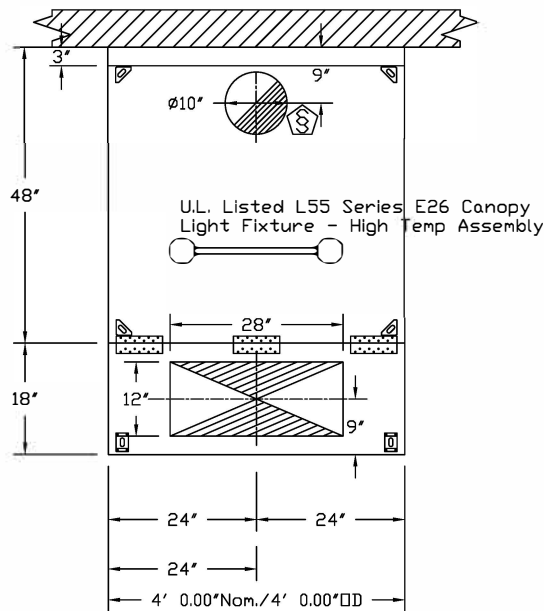
Approved with NO Exception Taken ☐

Revise and Resubmit ☐

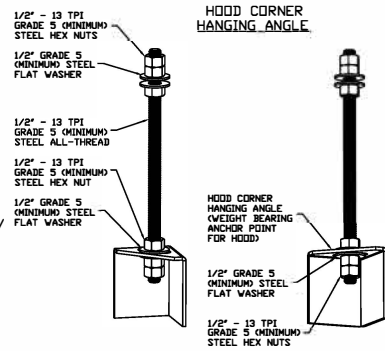
SIGNATURE _____

Your Title _____

Date _____

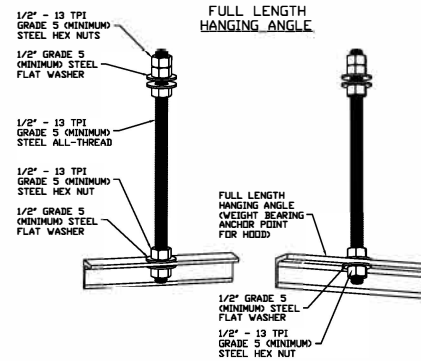


PLAN VIEW - Hood #1
4' 0.00" LONG 4824EX-2-PSP-F



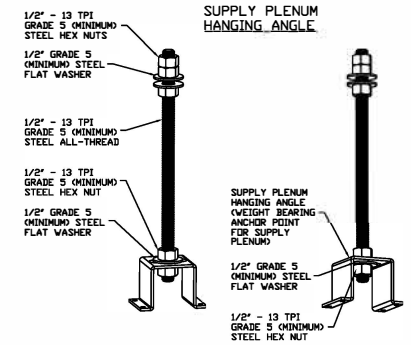
ASSEMBLY INSTRUCTIONS

HANGING ANGLE MUST BE SUPPORTED WITH 1/2" - 13 TPI GRADE 5 (MINIMUM) ALL-THREAD, SANDWICH HANGING ANGLES AND CEILING ANCHOR POINTS WITH 1/2" GRADE 5 (MINIMUM) STEEL FLAT WASHERS AND 1/2" - 13 TPI GRADE 5 (MINIMUM) HEX NUTS AS SHOWN. MUST USE DOUBLED HEX NUT CONFIGURATION BENEATH HOOD HANGING ANGLES AND ABOVE CEILING ANCHORS. MAINTAIN 1/4" OF EXPOSED THREADS BENEATH BOTTOM HEX NUT. TORQUE ALL HEX NUTS TO 57 FT-LBS.



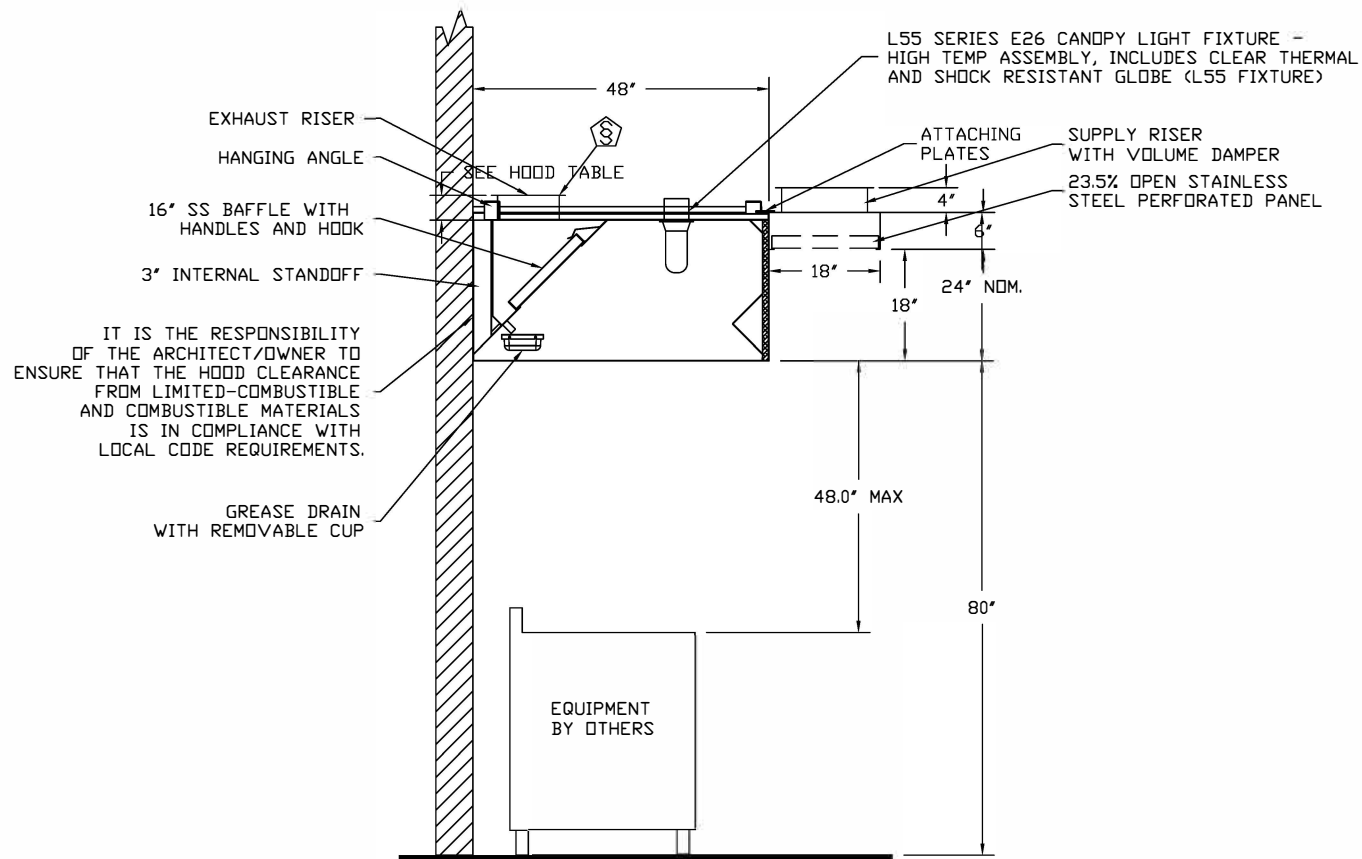
ASSEMBLY INSTRUCTIONS

HANGING ANGLE MUST BE SUPPORTED WITH 1/2" - 13 TPI GRADE 5 (MINIMUM) ALL-THREAD, SANDWICH HANGING ANGLES AND CEILING ANCHOR POINTS WITH 1/2" GRADE 5 (MINIMUM) STEEL FLAT WASHERS AND 1/2" - 13 TPI GRADE 5 (MINIMUM) HEX NUTS AS SHOWN. MUST USE DOUBLED HEX NUT CONFIGURATION ABOVE CEILING ANCHORS. SINGLE HEX NUT BENEATH HANGING ANGLE IS ACCEPTABLE FOR FULL LENGTH HANGING ANGLES. MAINTAIN 1/4" OF EXPOSED THREADS BENEATH BOTTOM HEX NUT. TORQUE ALL HEX NUTS TO 57 FT-LBS.



ASSEMBLY INSTRUCTIONS

HANGING ANGLE MUST BE SUPPORTED WITH 1/2" - 13 TPI GRADE 5 (MINIMUM) ALL-THREAD, SANDWICH HANGING ANGLES AND CEILING ANCHOR POINTS WITH 1/2" GRADE 5 (MINIMUM) STEEL FLAT WASHERS AND 1/2" - 13 TPI GRADE 5 (MINIMUM) HEX NUTS AS SHOWN. MUST USE DOUBLED HEX NUT CONFIGURATION ABOVE CEILING ANCHORS. SINGLE HEX NUT BENEATH HANGING ANGLE IS ACCEPTABLE FOR PSP HANGING ANGLES. MAINTAIN 1/4" OF EXPOSED THREADS BENEATH BOTTOM HEX NUT. TORQUE ALL HEX NUTS TO 57 FT-LBS.



SECTION VIEW - MODEL 4824EX-2-PSP-F
HOOD - #1

EXHAUST FAN INFORMATION -

FAN UNIT NO.	TAG	FAN UNIT MODEL #	CFM	ESP.	RPM	H.P.	B.H.P.	Ø	VOLT	FLA	WEIGHT (LBS.)	SONES
1		EADU33H	900	0.500	1466	0.333	0.2150	1	115	5.6	60	11.2

MUA FAN INFORMATION - Job#2745627

FAN UNIT NO.	TAG	FAN UNIT MODEL #	BLOWER	HOUSING	DESIGN CFM	ESP.	RPM	H.P.	B.H.P.	Ø	VOLT	FLA	WEIGHT (LBS.)	SONES
2		EA-A1-G10	G10	A1	720	0.250	489	0.333	0.0650	1	115	7.0	219	6.4

FAN OPTIONS

FAN UNIT NO.	TAG	OPTION (Qty. - Descr.)
1		1 - Grease Box

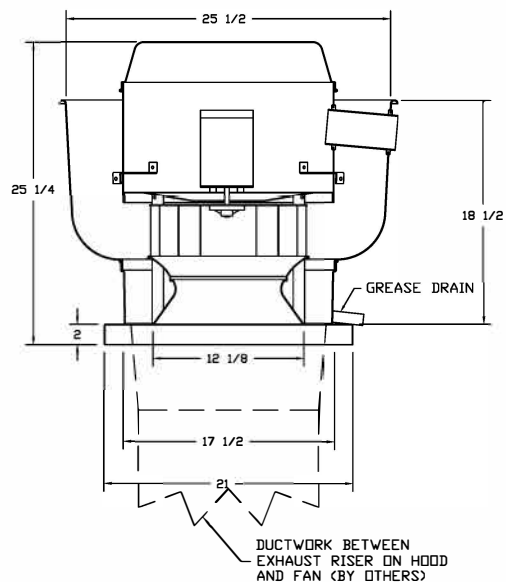
FAN ACCESSORIES

FAN UNIT NO.	TAG	EXHAUST			SUPPLY			
		GREASE CUP	GRAVITY DAMPER	WALL MOUNT	SIDE DISCHARGE	GRAVITY DAMPER	MOTORIZED DAMPER	WALL MOUNT
1		YES						

CURB ASSEMBLIES

NO.	ON FAN	WEIGHT	ITEM	SIZE
1	# 1	31 LBS	Curb	19.500"W x 19.500"L x 20.000"H Hinged
2	# 2	29 LBS	Curb	21.000"W x 21.000"L x 20.000"H

FAN #1 EADU33H - EXHAUST FAN



FEATURES:

- DIRECT DRIVE CONSTRUCTION (NO BELTS/PULLEYS)
- ROOF MOUNTED FANS
- RESTAURANT MODEL
- UL705 AND UL762
- VARIABLE SPEED CONTROL
- INTERNAL WIRING
- WEATHERPROOF DISCONNECT
- THERMAL OVERLOAD PROTECTION (SINGLE PHASE)
- HIGH HEAT OPERATION 300°F (149°C)
- GREASE CLASSIFICATION TESTING

NORMAL TEMPERATURE TEST

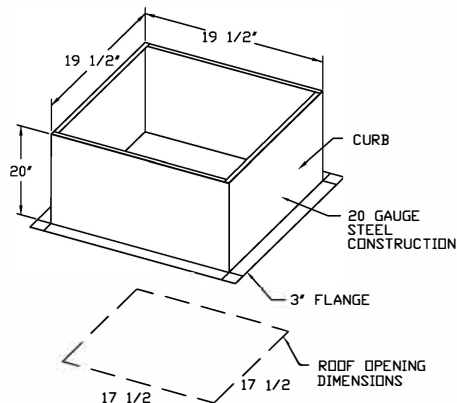
EXHAUST FAN MUST OPERATE CONTINUOUSLY WHILE EXHAUSTING AIR AT 300°F (149°C) UNTIL ALL FAN PARTS HAVE REACHED THERMAL EQUILIBRIUM, AND WITHOUT ANY DETERIORATING EFFECTS TO THE FAN WHICH WOULD CAUSE UNSAFE OPERATION.

ABNORMAL FLARE-UP TEST

EXHAUST FAN MUST OPERATE CONTINUOUSLY WHILE EXHAUSTING BURNING GREASE VAPORS AT 600°F (316°C) FOR A PERIOD OF 15 MINUTES WITHOUT THE FAN BECOMING DAMAGED TO ANY EXTENT THAT COULD CAUSE AN UNSAFE CONDITION.

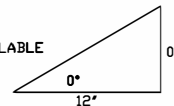
OPTIONS

GREASE BOX



PITCHED CURBS ARE AVAILABLE FOR PITCHED ROOFS.

SPECIFY PITCH:
EXAMPLE: 7/12 PITCH = 30° SLOPE

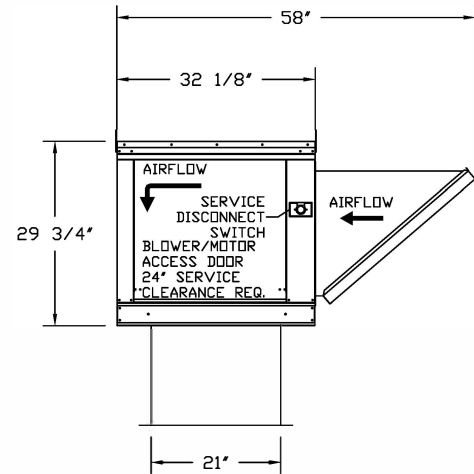
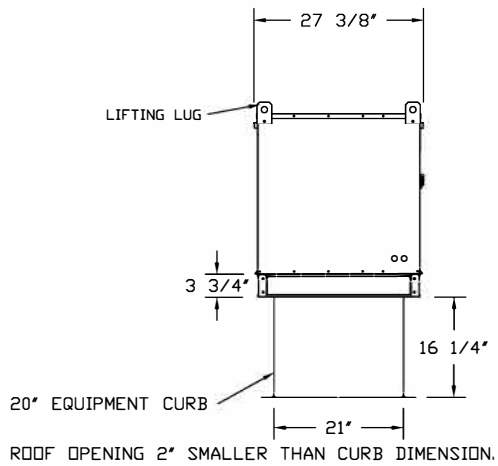
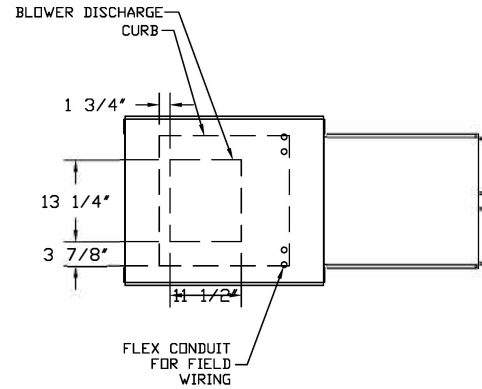


FAN #2 EA-A1-G10 - SUPPLY FAN

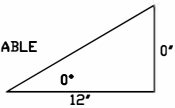
1. UNTEMPERED SUPPLY UNIT WITH 10" BLOWER IN SIZE #1 HOUSING

2. INTAKE HOOD WITH EZ FILTERS-LOW CFM

3. DOWN DISCHARGE - AIR FLOW RIGHT -> LEFT



PITCHED CURBS ARE AVAILABLE FOR PITCHED ROOFS.



SPECIFY PITCH:
EXAMPLE: 7/12 PITCH = 30° SLOPE



GREASE DUCT SPECIFICATIONS:

PROVIDE GREASE DUCT EQUAL TO ECON-AIR MODEL "EDW"
ROUND 20 GAUGE 430 STAINLESS STEEL DUCTWORK. MODEL "EDW"
IS LISTED TO UL-1978 AND IS INSTALLED USING "V" CLAMP LOCKING
CONNECTIONS SEALED WITH 3M FIRE BARRIER 2000 PLUS. MODEL "EDW"
DOES NOT REQUIRE WELDING PROVIDING IT HAS BEEN INSTALLED PER
THE MANUFACTURES INSTALLATION GUIDE.

PROVIDE RATED ACCESS DOORS AT EVERY CHANGE IN DIRECTION AND EVERY 12' ON CENTER.
PER MANUFACTURES LISTING MODEL "EDW" HORIZONTAL RUNS LESS THAN 75 FT. CAN BE
SLOPED 1/16" PER 12", HORIZONTAL RUNS MORE THAN 75 FT. CAN BE SLOPED 3/16" PER 12".
DUCT SHOULD BE SLOPED AS MUCH AS POSSIBLE TO REDUCE THE CHANCE OF GREASE
ACCUMULATION IN HORIZONTAL RUNS.

IF THE DUCT IS WITHIN 18 INCHES OF COMBUSTIBLE MATERIAL, PROVIDE UL-2221 LISTED
DOUBLE WALL GREASE DUCT EQUAL TO ECON-AIR MODEL "EDW- 2R, 3R, OR 3Z" ROUND 20
GAUGE 430 STAINLESS INNER DUCT INSULATED WITH A 24 GAUGE 430 STAINLESS OUTER
SHELL.

CUSTOMER APPROVAL TO MANUFACTURE:

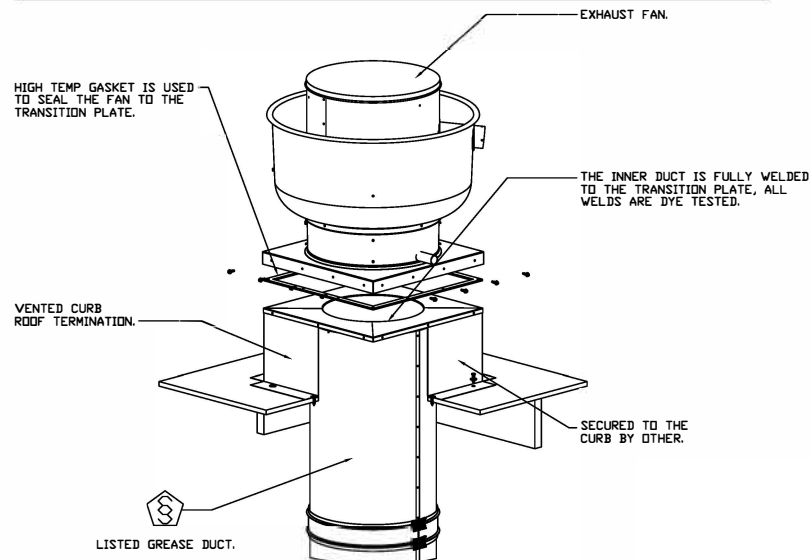
Approved as Noted ☐

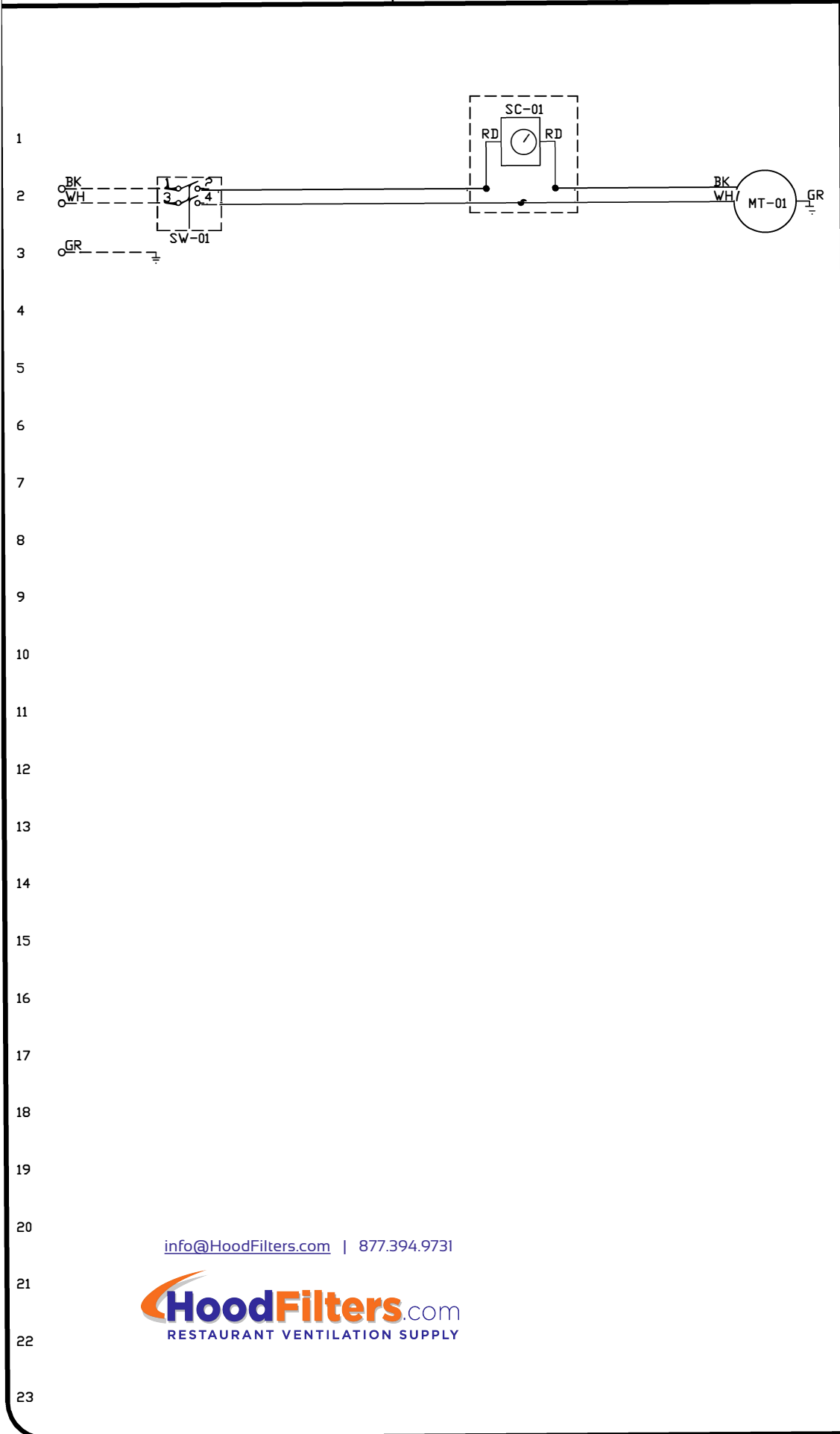
Approved with NO Exception Taken ☐

Revise and Resubmit ☐

SIGNATURE _____

Your Title _____ Date _____





Installed Options

Speed Control

Component Identification		
Label	Description	Location
MT-01	Fan Motor	[20]
QD-01	Quick Disconnect	[20]
SC-01	Speed Control	[10]
SW-01	Main disconnect switch	[20]

MOTOR INFO

EXHAUST 0.333HP-115V-1P-5.6FLA

ELECTRICAL INFORMATION

MOTOR/CTRL MCA: 7.0A

MOTOR/CTRL MOP: 15A

NOTES

----- DENOTES FIELD WIRING

————— DENOTES INTERNAL WIRING

WIRE COLOR

BK - BLACK YW - YELLOW

BL - BLUE GR - GREEN

BR - BROWN GY - GRAY

OR - ORANGE PR - PURPLE

RD - RED PK - PINK

WH - WHITE

AirHandler Wiring

DRAWING NUMBERA2745627-2

MODEL EA-A1-G10

ATTENTION ELECTRICIAN!
DROP FOR DISCONNECT CONNECTION
IS FACTORY SUPPLIED
CONNECT POWER TO THE DROP

1

2

3

4

5

6

7

8

9

10

11

12

13

14

15

16

17

18

19

20

21

22

23

BK

RD

GR

1

2

3

4

MT-01

GR

SW-01

Component Identification

Label	Description	Location
MT-01	Supply motor	[20]
SW-01	Main disconnect switch	[20]

MOTOR INFO

SUPPLY0.333HP-115V-1P-7.0FLA

ELECTRICAL INFORMATION

MOTOR/CTRL CIRCUIT MCA: 8.8A
MOTOR/CTRL CIRCUIT MDP: 15A

NOTES

----- DENOTES FIELD WIRING
————— DENOTES INTERNAL WIRING

WIRE COLOR

BK - BLACK
BL - BLUE
BR - BROWN
OR - ORANGE
RD - RED
WH - WHITE

YW - YELLOW
GR - GREEN
GY - GRAY
PR - PURPLE
PK - PINK

info@HoodFilters.com | 877.394.9731

HoodFilters.com

RESTAURANT VENTILATION SUPPLY